



KALLIKRATIS

- ❖ How a Metropolitan Municipality can offer the existing ,or even better service to the citizens ?
- ❖ The soonest possible
- ❖ At the lower cost

The Local Network-wireless

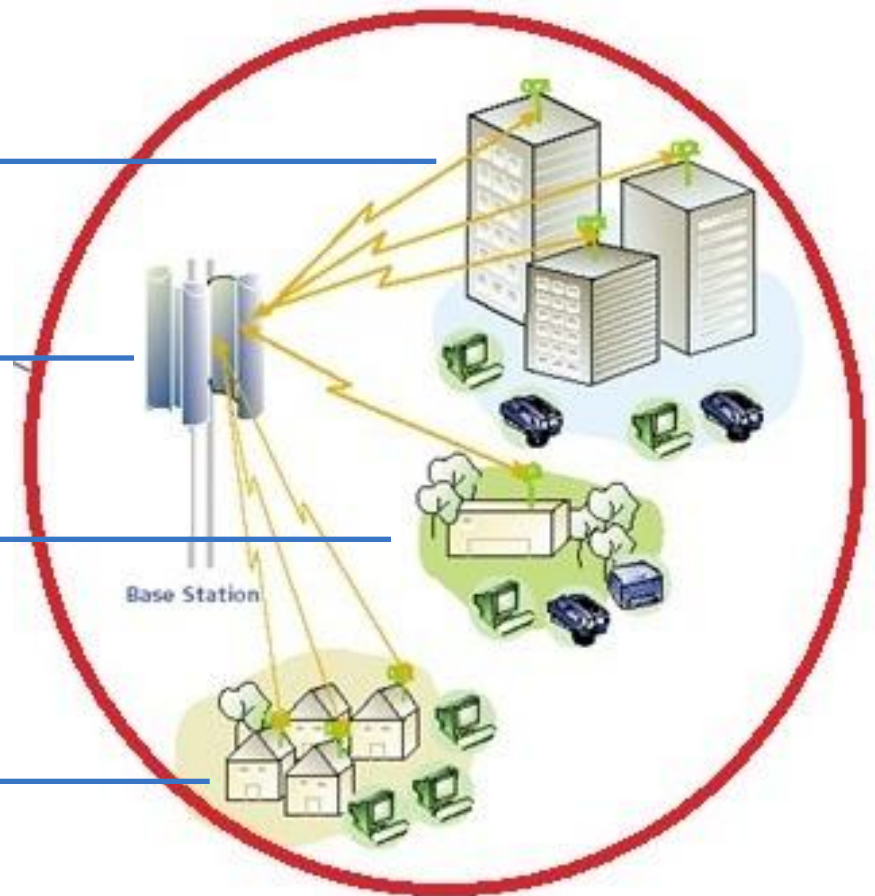
4-8 Mbps for
Teleconference,
e-learning,
WebTV

2 Mbps for
e-government
services

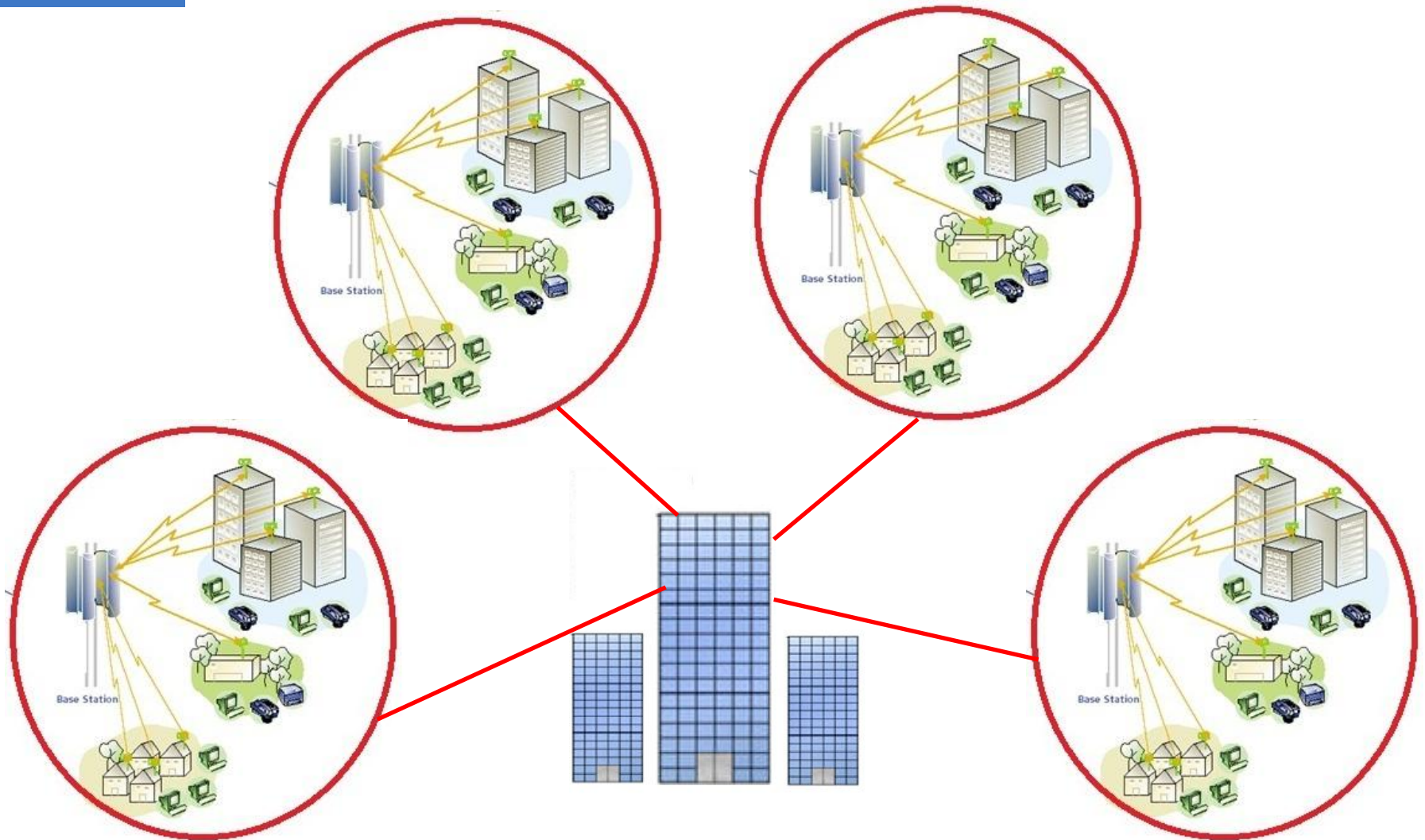
1 Mbps for
accounting
services

1 Mbps for
e-health
services

10-15
Mbps

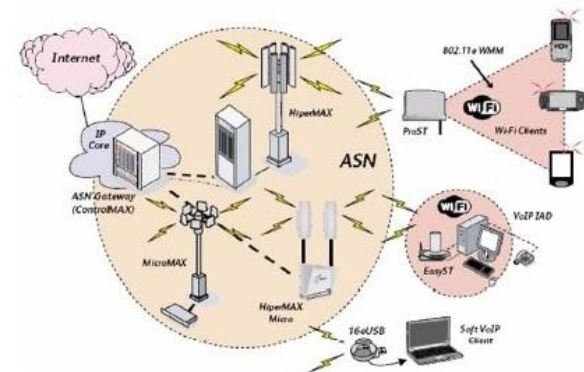
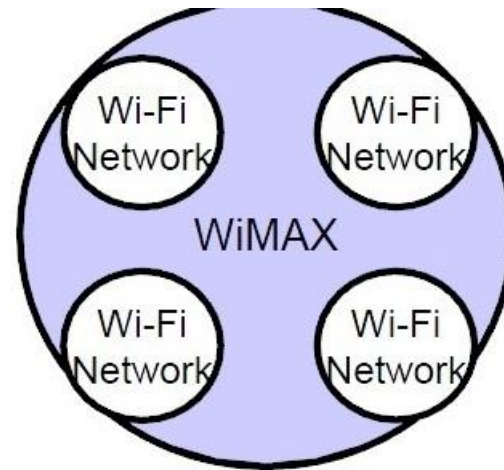


The National Network - fttb



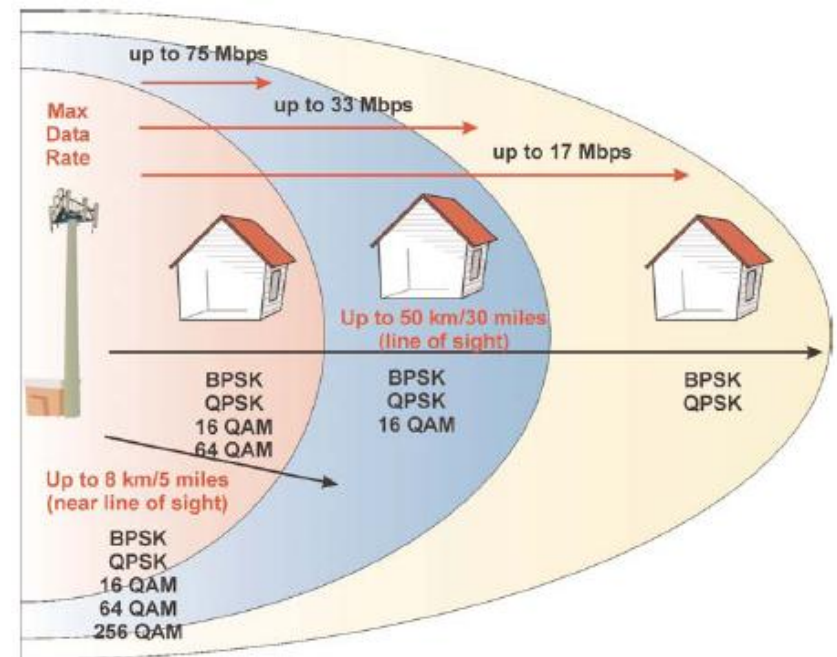
The solution

- ❖ WiMAX can be used to provide backhaul in both cellular and Wi-Fi networks
- ❖ For users, it provides them with services where they did not have access before and fills the missing gaps
- ❖ For the Hot-Spot providers, it provides a cost – effective alternative as opposed to a T1 leased line



The WiMAX technology

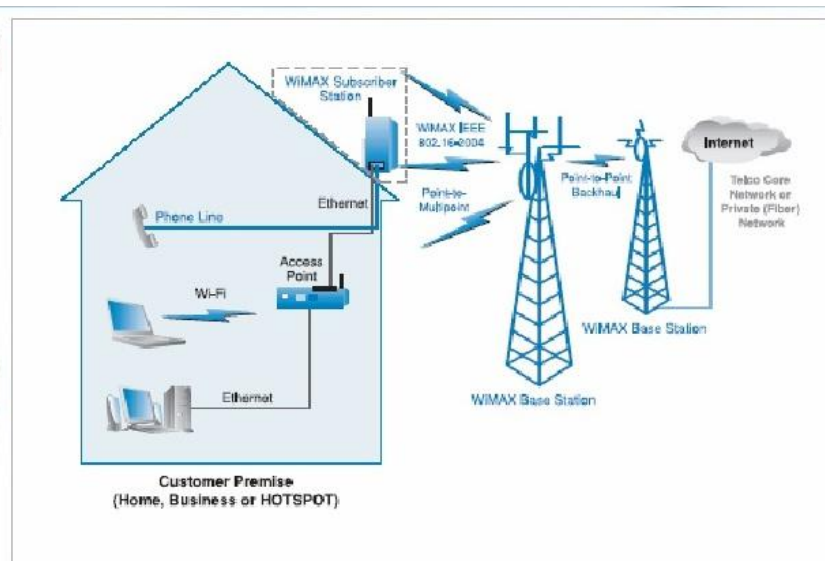
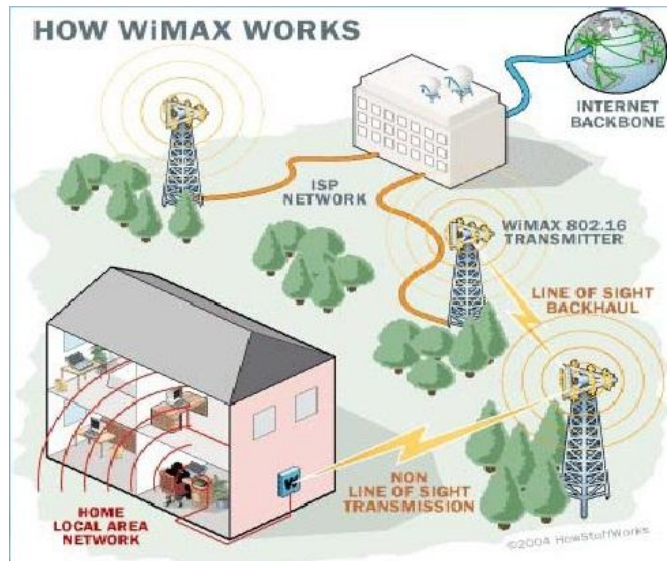
WiMAX	Wi-Fi
<ul style="list-style-type: none">❑ PMP wireless technology❑ MAN❑ Range: 10 Km❑ Covers a small city with one base station❑ Throughput: 70 Mbps❑ Security: Multi-level encryption❑ QoS: Dynamic bandwidth allocation, good for video & voice❑ MAC: scheduling algorithm	<ul style="list-style-type: none">❑ PMP wireless technology❑ LAN❑ Range: 300 feet❑ Covers one floor of an office building, one home...❑ Throughput: 11 Mbps❑ Security: limited❑ QoS: Limited❑ MAC: contention access



WiMAX Scenario

Many BSs connect to each other: increase capacity, coverage

Indoor many users and applications share the connection



**Thank you for your
attention**

You are always welcomed to our city



e-trikala
e-services for the citizens